

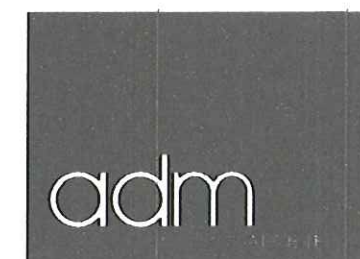
© COPYRIGHT-These drawings remain the exclusive copyright of ADM Architects. Reproductions in any form whether electronic, digital or otherwise shall not be allowed except by express permission granted in writing by ADM Architects. Holders users and operators of these drawings require proof evidenced in writing that ADM Architects has written permission to use these drawings or shall otherwise be in breach of the Copyright Act and become liable accordingly.
 a FIGURED DIMENSIONS- These drawings are not to be scaled. Figured dimensions shall be used in all cases.
 a NOMINATED ARCHITECT- The nominated Architect for ADM Projects (Australia) Pty Ltd TIA ADM Architects is Angelo Di Martino ANB N°7608

ISSUE	DATE	DESCRIPTION
A	19.10.10	ISSUED FOR DA
B	30.03.11	AMENDED FOR DA

NOT FOR CONSTRUCTION

COLOUR PALETTE

1	DULUX CARAMEL CRAVING
2	DULUX LINSEED
3	DULUX HAROLD
4	DULUX ORANGEADE
5	DULUX GRAPE LEAF
6	DULUX HOG BRISTLE
7	ANODISED SILVER



94 Kembla St, Wollongong NSW 2500 PO Box 3061 Wollongong
 ph: 02 4228 6400 fax: 02 4228 6455 www.admarchitects.com.au

Project
 PROPOSED MIXED USE DEVELOPMENT
 STAGE 1-COMPRISING 105 APARTMENTS OVER
 COMMERCIAL SPACE AND BASEMENT PARKING
 STAGE 2 -COMPRISING 102 APARTMENTS OVER
 COMMERCIAL SPACE AND BASEMENT PARKING

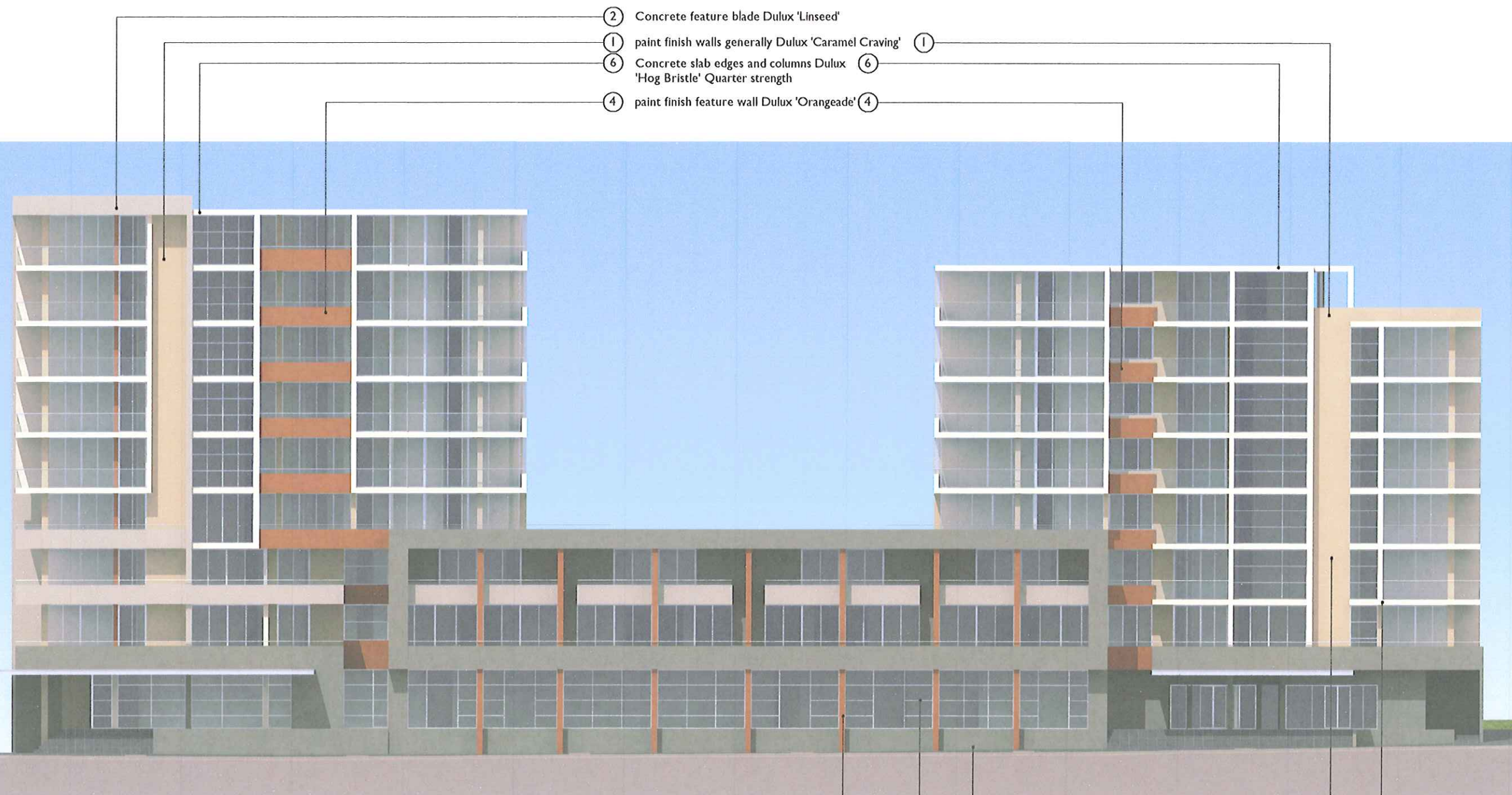
At
 LOTS 37-42 D.P 10704, LOTS 1 & 2 D.P 395582
 LOT A D.P 411 527 , LOT A D.P 340379
 LOT C D.P 348551
 GLADSTONE AVENUE, OSBORNE STREET &
 ROWLAND AVENUE WOLLONGONG

For
 NICOLAS DAOUD PTY. LTD.

Title
 DEVELOPMENT APPLICATION
 STAGE 1
 COLOUR SCHEDULE

Scale	Date	
1:200@ A1 1:400@ A3	MARCH 2011	
Drawn	Checked	
D.F	ADM	
Project No	Drawing No	Issue
2009-30	DA41	B

copyright of adm architects



EXTERNAL COLOUR SCHEDULE NORTH ELEVATION GLADSTONE AVENUE - WOLLONGONG

- ② Concrete feature blade Dulux 'Linseed'
- ① paint finish walls generally Dulux 'Caramel Craving'
- ⑥ Concrete slab edges and columns Dulux 'Hog Bristle' Quarter strength
- ④ paint finish feature wall Dulux 'Orangeade'
- ③ textured paint finish to concrete feature framing Dulux 'Harold'
- ⑦ Anodised Silver Clear Finish to windows and sliding doors
- ④ Concrete columns paint finish Dulux 'Orangeade'
- ① paint finish walls generally Dulux 'Caramel Craving'
- ⑥ Concrete slab edges and columns Dulux 'Hog Bristle' Quarter strength

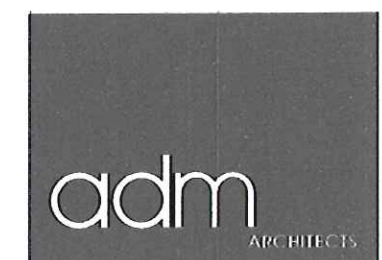
o COPYRIGHT-These drawings remain the exclusive copyright of ADM Architects. Reproductions in any form whether electronic, digital or otherwise shall not be allowed except by express permission granted in writing by ADM Architects. Holders users and operators of these drawings require proof evidenced in writing that ADM Architects has written permission to use these drawings or shall otherwise be in breach of the Copyright Act and become liable accordingly.
o FIGURED DIMENSIONS- These drawings are not to be scaled. Figured dimensions shall be used in all cases.
o NOMINATED ARCHITECT- The nominated Architect for ADM Projects (Australia) Pty Ltd T/AS ADM Architects is Angelo Di Martino AAB No.7608

ISSUE	DATE	DESCRIPTION
A	19.10.10	ISSUED FOR DA
B	30.03.11	AMENDED FOR DA

NOT FOR CONSTRUCTION



CNR OF GLADSTONE AVENUE & OSBORNE STREET ASPECT
VIEW LOOKING SOUTH



94 Kembla St, Wollongong NSW 2500 PO Box 3061 Wollongong
ph. 02 4228 6400 fax. 02 4228 6455 www.admarchitects.com.au

Project
PROPOSED MIXED USE DEVELOPMENT
STAGE 1-COMPRISING 105 APARTMENTS OVER
COMMERCIAL SPACE AND BASEMENT PARKING
STAGE 2 -COMPRISING 102 APARTMENTS OVER
COMMERCIAL SPACE AND BASEMENT PARKING
At
LOTS 37-42 D.P 10704, LOTS 1 & 2 D.P 395582
LOT A D.P 411527 , LOT A D.P 340379
LOT C D.P 348551
GLADSTONE AVENUE, OSBORNE STREET &
ROWLAND AVENUE WOLLONGONG

For
NICOLAS DAOUD PTY. LTD.

Title
DEVELOPMENT APPLICATION
STAGE 1 & STAGE 2
STREETSCAPE PHOTOMONTAGE 1

Scale	Date	
N.T.S.	MARCH 2011	
Drawn	Checked	
D.F	ADM	
Project No	Drawing No	Issue
2009-30	DA42	B

copyright of adm architects

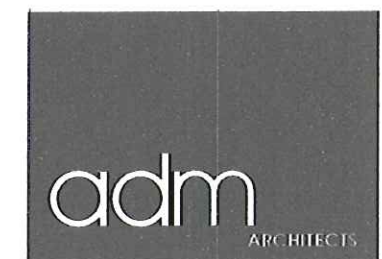
© COPYRIGHT-These drawings remain the exclusive copyright of ADM Architects. Reproductions in any form whether electronic, digital or otherwise shall not be allowed except by express permission granted in writing by ADM Architects. Holders users and operators of these drawings require proof evidenced in writing that ADM Architects has written permission to use these drawings or shall otherwise be in breach of the Copyright Act and become liable accordingly.
© FIGURED DIMENSIONS- These drawings are not to be scaled. Figure dimensions shall be used in all cases.
© NOMINATED ARCHITECT- The nominated Architect for ADM Projects (Australia) Pty Ltd T/as ADM Architects is Angelo Di Martino ABB No.7608

ISSUE	DATE	DESCRIPTION
A	19.10.10	ISSUED FOR DA
B	30.03.11	AMENDED FOR DA

NOT FOR CONSTRUCTION



OSBORNE STREET ASPECT
VIEW LOOKING EAST



94 Kembla St, Wollongong NSW 2500 PO Box 3061 Wollongong
ph 02 4228 6400 fax 02 4228 6455 www.admarchitects.com.au

Project
PROPOSED MIXED USE DEVELOPMENT
STAGE 1 - COMPRISES 105 APARTMENTS OVER
COMMERCIAL SPACE AND BASEMENT PARKING
STAGE 2 - COMPRISES 102 APARTMENTS OVER
COMMERCIAL SPACE AND BASEMENT PARKING
At
LOTS 37-42 D.P 10704, LOTS 1 & 2 D.P 395582
LOT A D.P 411 527, LOT A D.P 340379
LOT C D.P 348551
GLADSTONE AVENUE, OSBORNE STREET &
ROWLAND AVENUE WOLLONGONG

For
NICOLAS DAOUD PTY. LTD.

Title
DEVELOPMENT APPLICATION
STAGE 1 & STAGE 2
STREETSCAPE PHOTOMONTAGE 2

Scale N.T.S.	Date MARCH 2011	
Drawn D.F	Checked ADM	
Project No. 2009-30	Drawing No DA43	Issue B

copyright of adm architects

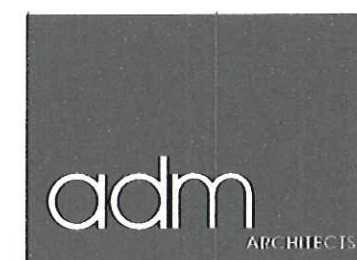
© COPYRIGHT-These drawings remain the exclusive copyright of ADM Architects. Reproductions in any form whether electronic, digital or otherwise shall not be allowed except by express permission granted in writing by ADM Architects. Holders users and operators of these drawings require proof evidenced in writing that ADM Architects has written permission to use these drawings or shall otherwise be in breach of the Copyright Act and become liable accordingly.
© FIGURED DIMENSIONS- These drawings are not to be scaled. Figured dimensions shall be used in all cases.
© NOMINATED ARCHITECT- The nominated Architect for ADM Projects (Australia) Pty Ltd T/as ADM Architects is Angelo Di Martino A38 No.7608

ISSUE	DATE	DESCRIPTION
A	19.10.10	ISSUED FOR DA
B	30.03.11	AMENDED FOR DA

NOT FOR CONSTRUCTION



ROWLAND AVENUE APSPECT
VIEW LOOKING EAST



94 Kembla St, Wollongong NSW 2500 PO Box 3061 Wollongong
ph: 02 4228 6400 fax: 02 4228 6455 www.admarchitects.com.au

Project
PROPOSED MIXED USE DEVELOPMENT
STAGE 1-COMPRISING 105 APARTMENTS OVER
COMMERCIAL SPACE AND BASEMENT PARKING
STAGE 2 -COMPRISING 102 APARTMENTS OVER
COMMERCIAL SPACE AND BASEMENT PARKING
At
LOTS 37-42 D.P 10704, LOTS 1 & 2 D.P 395582
LOT A D.P 411527 , LOT A D.P 340379
LOT C D.P 348551
GLADSTONE AVENUE, OSBORNE STREET &
ROWLAND AVENUE WOLLONGONG

For
NICOLAS DAOUD PTY. LTD.

Title
DEVELOPMENT APPLICATION
STAGE 1 & STAGE 2
STREETSCAPE PHOTOMONTAGE 3

Scale N.T.S.	Date MARCH 2011	
Drawn D.F	Checked ADM	
Project No 2009-30	Drawing No DA44	Issue B

copyright of adm architects